

BECKETT AIR™

Quick Reference Product Guide

Beckett Air's range of airflow products is extensive, from small fans to complex blower assemblies. We are focused on exceeding our customer's expectations for performance, quality, cost, and delivery. We have extensive in-house capabilities in product design, tooling design and fabrication, and automated assembly processes. Partner with us for your next project!

Contact us to discuss your airflow product needs by calling 1-800-831-7839 or via e-mail at customerservice@beckettair.com. Find more information at www.beckettair.com.

Forward Curved Centrifugal Wheels

KEY RIVET

SINGLE INLET SIZE RANGE: 3.80 inch (97mm) to 8.82 inch (224mm)

DOUBLE INLET SIZE RANGE: 3.80 inch (97 mm) to 8.82 inch (224 mm)

FEATURES: Lighter, quieter, stronger and more efficient than conventional "tab lock" or strip wheels. Advanced assembly process assures precise concentricity and balance to specifications.



STRIP

SINGLE INLET SIZE RANGE: 2.50 inch (64 mm) to 6.25 inch (159 mm)

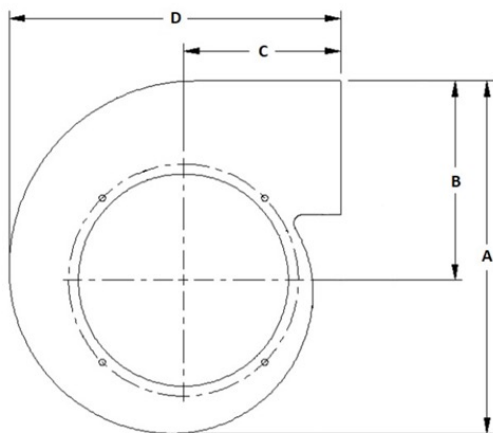
DOUBLE INLET SIZE RANGE: 2.50 inch (64 mm) to 6.25 inch (159 mm)

FEATURES: Well suited for a wide variety of applications. Unique blade angle and curvature deliver maximum airflow to meet customer requirements. Beckett Air's automated assembly process produces a rigidly constructed strip wheel.



Blower Assemblies & Housings

Optimize your system performance with a Beckett Air blower assembly. Superior blower efficiency is the result of our design process which includes consideration of all performance factors (CFM, pressure and low noise, etc.). We offer an extensive range of housings, inlet rings, outlet collars and accessories that are available in a variety of material choices.



Model	Max Wheel Dia.	Overall Height	Outlet to Inlet Height	Outlet to Inlet Length	Overall Length
	(in)	A (in)	B (in)	C (in)	D (in)
250	2.59	4.67	2.66	2.38	4.69
250C	3.16			2.63	
300	3.16	5.54	3.09	2.4	5.26
300C	3.85			2.83	
350	4.03	6.75	3.81	3.04	6.41
350C	5.00			3.50	
375	5.00	7.58	4.31	3.31	7.09
450	5.03	8.02	4.69	3.94	7.76
450C	5.35			4.13	
500	6.03	8.66	5.00	4.03	8.25
500C	6.53			4.81	
525	5.35	9.31	5.31	3.90	8.56
525C	6.03			5.09	
600	6.28	9.61	5.38	4.45	9.26
600C	6.97			4.88	
615	6.72	10.65	5.99	4.46	9.76
625	6.47	11.00	6.50	4.85	10.16
625C	8.05			5.50	
750	8.05	13.47	7.67	5.50	12.19
750C	9.53			7.94	
800	9.53	15.06	8.63	6.50	14.10

AXIAL FANS

SMALL FANS: multiple blade styles and options ranging from 1.38 inch (35 mm) to 4.00 inch (102 mm)

LARGE FANS: multiple styles and 4, 5, and 6 blade options ranging from 4.0 inch (102 mm) to 14.00 inch (356 mm)

FEATURES: Ideally suited for applications requiring motor or electronics cooling or heat dissipation. Built with sturdy one-piece construction and are available in clockwise or counterclockwise



RADIAL FAN

MULTIPLE STYLES AND 6, 9, 10, 11, AND 12 BLADE OPTIONS: ranging from 1.75 inch (45 mm) to 6.00 inch (152 mm)

FEATURES: The perfect solution for applications requiring limited space and 90 degree airflow. Built with sturdy one-piece construction and available in clockwise, counterclockwise or bi-directional rotation as well as several material and mounting choices.

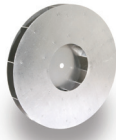


BACKWARD INCLINED WHEELS

FLAT INLET: 3.63 inch (92 mm) to 10.20 inch (259 mm)

CONICAL INLET: 8.56 inch (225 mm) to 11.02 inch (280 mm)

FEATURES: Our highly efficient backward inclined wheels are well suited for both higher static pressure and airflow applications. They also have extremely low sound levels and are ruggedly constructed for long life.



MIXED FLOW CENTRIFUGAL WHEELS

TWO DIAMETERS: 9 inch (229 mm) 10 inch (254 mm)

FEATURES: Combines the best of axial and centrifugal properties. Ideally suited for commercial appliances requiring high velocity air for rapid heat transfer.



CROSSFLOW WHEELS

SMALL DIAMETER: 2.36 inch (60 mm)

FEATURES: Unique lightweight design assures a strong and rigid construction. Used in a wide range of applications, such as ovens, dishwashers, fireplaces, coolers and heaters.

LARGE DIAMETER: 4.3 inch (110 mm) 4.7 inch (120 mm)

FEATURES: The length of our wheels provides uniform air delivery to achieve needed CFM, while the twist design ensures quiet operation. Our crossflow wheels are made in a unique, highly-automated assembly process. Most commonly used in air curtains and PTAC units, which are ideally suited for hotels, apartment buildings, hospitals and condominiums.



Beckett Air, Inc.
37850 Beckett Parkway
North Ridgeville, Ohio 44039